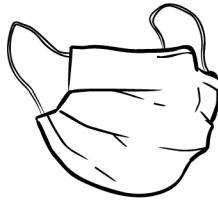


AT THE DENTIST

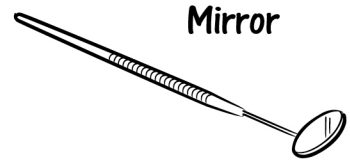
There is lots of equipment that you might see in your dentist's surgery. Find them in the word search below.



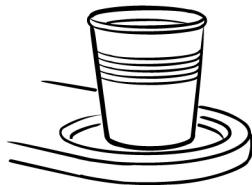
Chair



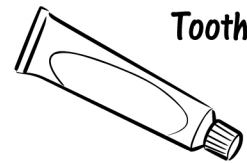
Mask



Mirror

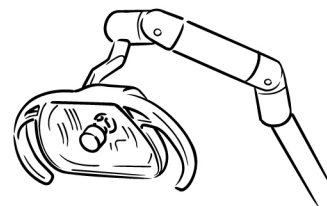


Mouth rinse



Toothpaste

Light



E	T	U	W	T	H	G	I	L	E
G	R	S	D	O	F	C	N	M	O
C	Y	E	C	O	Y	D	Q	E	I
G	K	L	D	T	R	R	R	G	J
M	O	U	T	H	R	I	N	S	E
I	A	W	Y	P	T	L	A	N	E
R	V	S	S	A	T	L	K	H	A
R	N	M	K	S	R	S	U	N	C
O	Q	E	I	T	Y	E	E	T	R
R	R	G	J	E	K	L	S	H	E